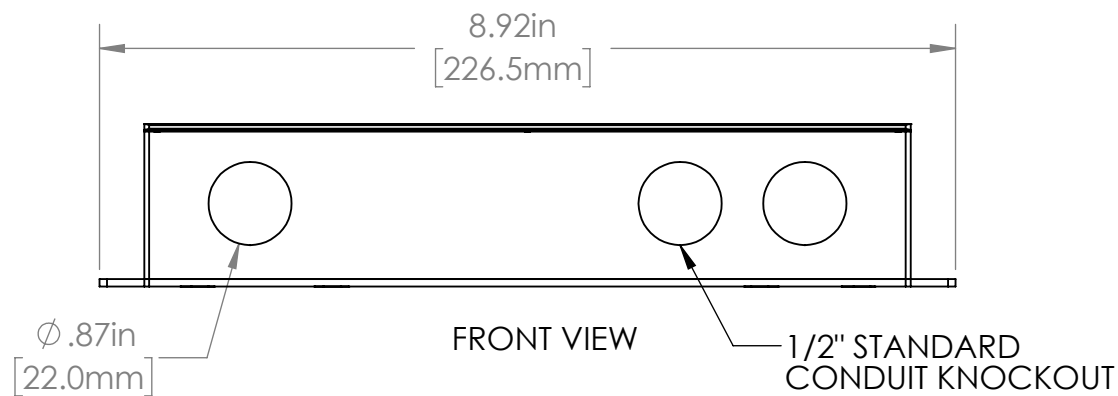
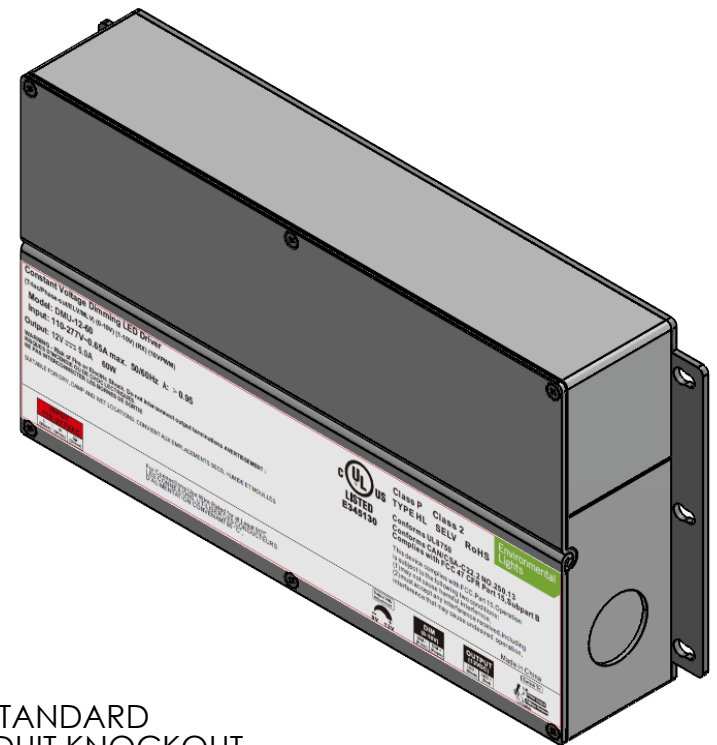
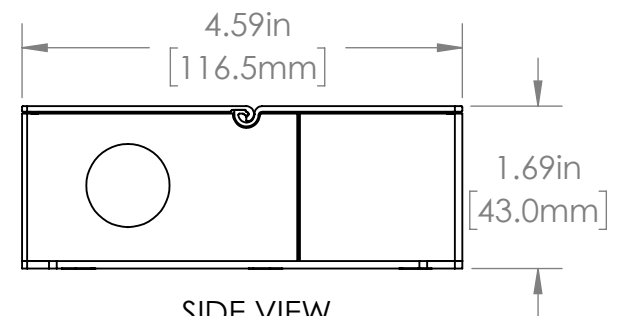


1/2" STANDARD
CONDUIT KNOCKOUT



1/2" STANDARD
CONDUIT KNOCKOUT



DRIVER SPECIFICATIONS		TOLERANCES	PROPRIETARY AND CONFIDENTIAL		NAME	DATE	<div>Environmental Lights™</div>			
NOMINAL INPUT VOLTAGE	110-277VAC		THE INFORMATION CONTAINED IN THIS DRAWING IS THE SOLE PROPERTY OF ENVIRONMENTAL LIGHTS. ANY REPRODUCTION IN PART OR AS A WHOLE WITHOUT THE WRITTEN PERMISSION OF ENVIRONMENTAL LIGHTS IS PROHIBITED.	DRAWN BY	J. PEREZ	5/11/2023				
MAX WATTAGE	60W			COMMENTS:						
NOMINAL VOUT	12VDC									
IP RATING	-									
CERTIFICATION	UL,cUL, CSA, FCC, ROHS									
				SCALE: 1:2			WEIGHT:	SHEET 1 OF 1		
							EL PART NO. DMU-12-60 - A1		REV A1	